

# THE CHASE 3-CAR

2,092 Square Feet  
3 Bedroom • 2 Bath



## KEY FEATURES

Great Room with vaulted Ceiling and Gas Fireplace

Covered Porch and Patio

Master Suite with Coffered Ceiling and Walk-In Closet

Eat-In Kitchen with Walk-In Pantry

Coffered Entry

3 Car Garage

## AVAILABLE ELEVATIONS



Elevation C



Elevation B



Elevation E



Elevation P



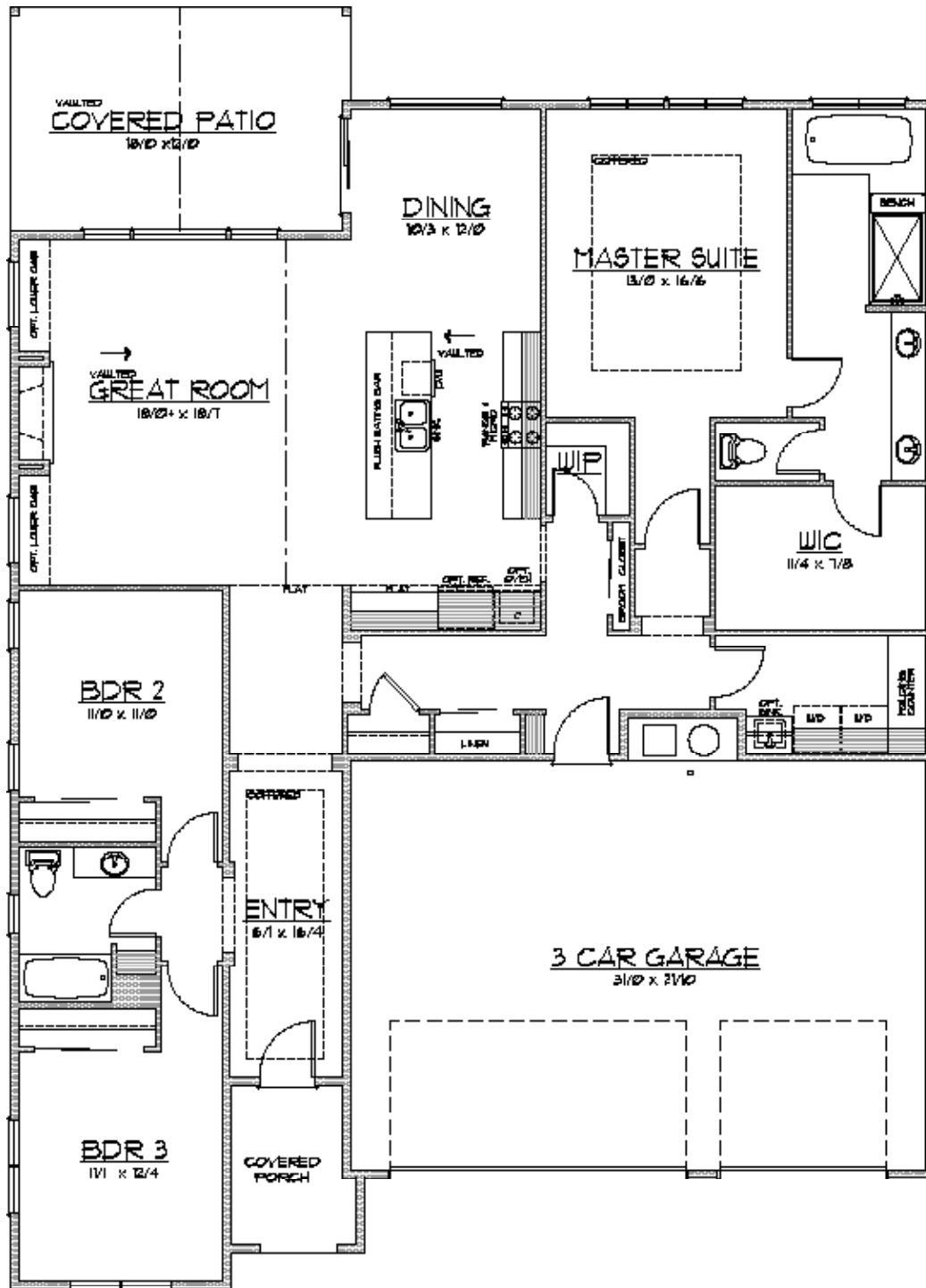
For more information visit us at [www.pahlischhomes.com](http://www.pahlischhomes.com)

Renderings and floorplans are artists conceptions and are not intended to be an actual depiction of the building, fencing, walkway, driveway or landscaping. Room sizes, square footage and ceiling details vary from one elevation to another. Square footages are approximate. Pahlisch Homes is an award winning homebuilder with locations in Central Washington, Southwest Washington, Northwest Oregon, Central Oregon, Southern Oregon, and Western Arizona. In the interest of continuous improvements, Pahlisch Homes, Inc. reserves the right to change plan design, pricing, and specifications without prior notice or obligation. 2016 – CCB#42067(OR) LIC#PAHLIH915J3(WA) LIC#275419(AZ)



# THE CHASE 3-CAR

2,092 Square Feet  
3 Bedroom • 2 Bath



For more information visit us at [www.pahlischhomes.com](http://www.pahlischhomes.com)

Renderings and floorplans are artists conceptions and are not intended to be an actual depiction of the building, fencing, walkway, driveway or landscaping. Room sizes, square footage and ceiling details vary from one elevation to another. Square footages are approximate. Pahlisch Homes is an award winning homebuilder with locations in Central Washington, Southwest Washington, Northwest Oregon, Central Oregon, Southern Oregon, and Western Arizona. In the interest of continuous improvements, Pahlisch Homes, Inc. reserves the right to change plan design, pricing, and specifications without prior notice or obligation. 2016 - CCB#42067(OR) LIC#PAHLIH915J3(WA) LIC#275419(AZ)

